



# NOTICE TO MARINERS

21.12.2018

## DUDGEON OFFSHORE WIND FARM Update of Failure of Navigations Lights, Lights, Fog signal and SAR lights

**NOTICE IS HEREBY GIVEN** that we have the below Navigation lights and Aviation lights failed. These will be reinstalled as soon as possible.

Name	Easting	Northing	Lon	Lat	Type	Failure of	Failure of
B02	390441	5902117	1,357,649	53,256,985	WTG	Inner SAR light 200cd	
H06	396170	5901440	1,443,715	53,252,053	WTG	Aviation light 2000cd Perimeter	Navigation Light

**All vessels in the Dudgeon Wind farm location are advised to give a wide berth to the wind farm and proceed with caution.**

We will try to reinstall over the coming 14 days.

The Dudgeon wind farm is now operating and there will be various vessels within the wind farm including the SOV Njord and Dalby Ouse CTV.

### **Service Operation Vessel**

The ESVAGT NJORD is performing support for the operation of the wind farm and will be in regular transit between the Dudgeon site and Great Yarmouth.

### **Crew transfer vessels**

The CTV DALBY OUSE is performing support for the operation of the wind farm and will be in regular transit between the Dudgeon site and Great Yarmouth.



## Crew transfer vessels

CTV's are operating 24hr per day onsite subject to weather.

## GENERAL

**ALL VESSELS ARE REQUESTED** to give all support vessels a wide berth.

**MARINERS ARE ADVISED** to navigate with caution and keep continued watch on VHF Ch. 16 when navigating the area.

Please direct any enquiries regarding this notice to Statoil Wind Control Centre:  
 statoilwindcontrol@equinor.com

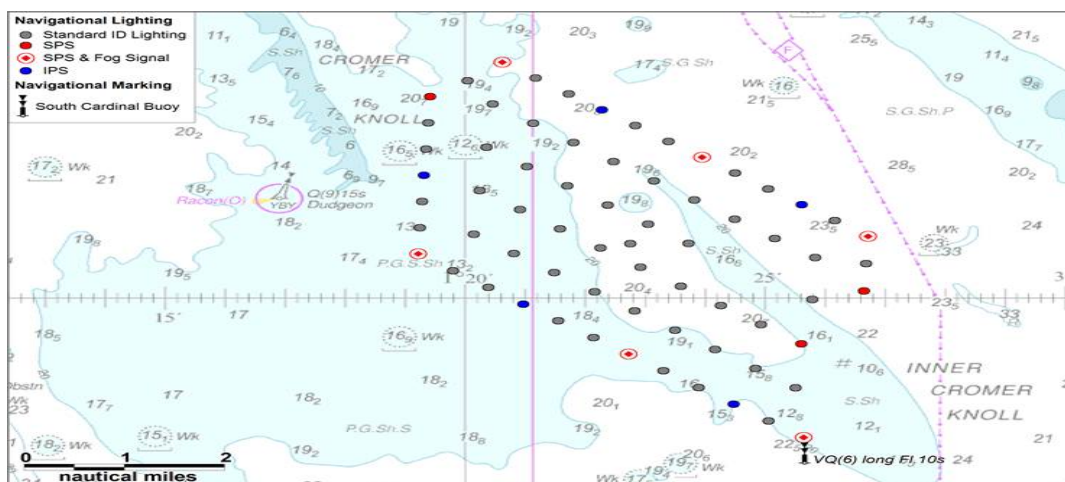
A copy of this notice can also be found at:

<http://dudgeonoffshorewind.co.uk/news/notice-to-mariners>

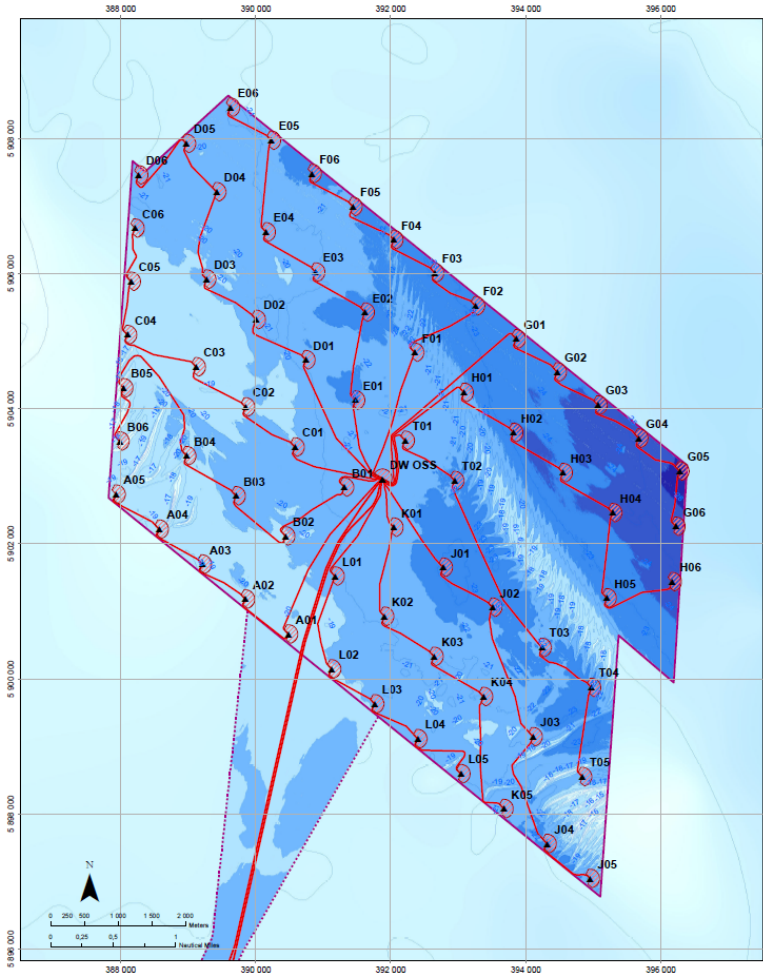
## SITE DETAILS

Position of Navigation Buoys

Mark	Location	Name	Latitude	Longitude	Status	Flash Character	Code	Range
South Cardinal	SE Cardinal	S - DUDGEON	53° 12,470' N	1° 25,617' E	Permanent	VQ(6) long Fl.10s	516	5nm



# WTG ID and locations (coordinates)



### WTG and Substation Locations

WTG	Easting	Northing	Lon DD	Lat DD	Depth	WTG	Easting	Northing	Lon DD	Lat DD	Depth
A01	390483.0	5900995.0	1.358777	53.243947	-19.5	F06	390534.0	5907486.0	1.361893	53.305308	-22.3
A02	389945.0	5901183.0	1.340042	53.248489	-19.8	G01	393359.0	5905030.0	1.407890	53.253006	-23.8
A03	388206.0	5901700.0	1.339289	53.252882	-19.0	G02	394465.0	5904540.0	1.417139	53.279826	-23.6
A04	388568.0	5902218.0	1.329549	53.257502	-19.2	G03	395070.0	5904050.0	1.428371	53.275343	-24.3
A05	387829.0	5902735.0	1.319782	53.262013	-18.8	G04	395675.0	5903560.0	1.435501	53.271090	-25.1
B01	391113.0	5902940.0	1.370468	53.265991	-21.5	G05	396281.0	5903070.0	1.444844	53.266765	-26.4
B02	390441.0	5902117.0	1.357649	53.256985	-19.9	G06	396225.0	5902250.0	1.444272	53.259423	-25.6
B03	389708.0	5902711.0	1.346480	53.262170	-20.5	H01	393086.0	5904243.0	1.389597	53.279827	-21.4
B04	389975.0	5903306.0	1.333268	53.267394	-19.3	H02	393320.0	5903949.0	1.407789	53.271438	-23.5
B05	388804.0	5904311.0	1.320916	53.276197	-18.2	H03	394553.0	5903055.0	1.418963	53.282466	-23.9
B06	387985.0	5903823.0	1.320354	53.269105	-18.2	H04	395287.0	5902491.0	1.430149	53.281054	-24.4
C01	390580.0	5903434.0	1.359278	53.269847	-20.1	H05	395204.0	5901196.0	1.428321	53.249698	-22.5
C02	389849.0	5904027.0	1.345102	53.274024	-19.8	H06	396170.0	5901440.0	1.443715	53.252353	-24.5
C03	389117.0	5904621.0	1.338937	53.279209	-19.4	T01	392212.0	5903533.0	1.383706	53.270071	-21.5
C04	388977.0	5905099.0	1.321478	53.283289	-19.4	T02	392948.0	5902936.0	1.394938	53.264856	-22.1
C05	388153.0	5905697.0	1.322040	53.288382	-19.4	T03	394241.0	5902490.0	1.416137	53.242520	-21.8
C06	388206.0	5906975.0	1.322002	53.297474	-20.0	T04	394874.0	5901873.0	1.428312	53.237737	-22.3
D01	390741.0	5904726.0	1.361247	53.280489	-21.7	T05	394940.0	5908551.0	1.424742	53.258332	-21.2
D02	390006.0	5905323.0	1.350222	53.285702	-20.9	J01	392777.0	5901853.0	1.392898	53.252293	-23.1
D03	392271.0	5905920.0	1.339789	53.290913	-21.1	J02	393599.0	5901090.0	1.402974	53.249112	-22.5
D04	389420.0	5907213.0	1.340577	53.302582	-20.2	J03	394107.0	5909145.0	1.413599	53.231024	-21.7
D05	388971.0	5907830.0	1.333591	53.308910	-20.3	J04	394315.0	5907562.0	1.417208	53.216841	-22.2
D06	388285.0	5907463.0	1.323185	53.304599	-20.3	J05	394954.0	5907045.0	1.426945	53.212322	-22.3
E01	391477.0	5904129.0	1.372469	53.276276	-22.2	K01	392345.0	5902348.0	1.391939	53.259473	-21.5
E02	391819.0	5905431.0	1.374170	53.287004	-22.4	K02	391907.0	5900928.0	1.380019	53.246802	-21.2
E03	390989.0	5906025.0	1.362975	53.292191	-20.7	K03	392940.0	5900334.0	1.391200	53.241413	-20.8
E04	390153.0	5906919.0	1.351778	53.297377	-20.6	K04	393373.0	5909750.0	1.402378	53.28214	-21.0
E05	390229.0	5907976.0	1.352448	53.305586	-21.5	L01	393978.0	5908979.0	1.407470	53.221359	-21.8
E06	389624.0	5908466.0	1.343201	53.313883	-21.1	L02	391174.0	5901522.0	1.388835	53.251789	-21.0
F01	392253.0	5904637.0	1.385377	53.281817	-21.7	L03	391122.0	5900148.0	1.389226	53.239433	-19.9
F02	393254.0	5905285.0	1.399654	53.289180	-23.2	L04	391700.0	5909931.0	1.378267	53.249118	-20.2
F03	392949.0	5906016.0	1.389417	53.292470	-22.8	L05	392399.0	5909114.0	1.388002	53.239402	-21.0
F04	392044.0	5906909.0	1.380177	53.296750	-22.4	L06	393038.0	5908590.0	1.397745	53.225877	-20.6
F05	391439.0	5906996.0	1.370936	53.301030	-22.0	Sub St (DW OSS)	391870.0	5902955.0	1.376776	53.264808	-21.1

### Legend Main Map

- ▲ WTG Layout Design Basis
- Exclusion Zone
- Sub Station
- Planned Interarray Cable Route
- Planned Export Cable Route
- Consented Field Outline
- Bathymetry (m rel. to LAT)

### Legend Bathymetry

- < -26
- 24 -26
- 22 -24
- 20 -22
- 18 -20
- 16 -18
- 14 -16
- 12 -14

### Legend Main Map

- ▲ WTG Layout Design Basis
- Exclusion Zone
- Sub Station
- Planned Interarray Cable Route
- Planned Export Cable Route
- Consented Field Outline
- Bathymetry (m rel. to LAT)

### Legend Bathymetry

- < -26
- 24 -26
- 22 -24
- 20 -22
- 18 -20
- 16 -18
- 14 -16
- 12 -14

### Legend Main Map

- ▲ WTG Layout Design Basis
- Exclusion Zone
- Sub Station
- Planned Interarray Cable Route
- Planned Export Cable Route
- Consented Field Outline
- Bathymetry (m rel. to LAT)

### Legend Bathymetry

- < -26
- 24 -26
- 22 -24
- 20 -22
- 18 -20
- 16 -18
- 14 -16
- 12 -14

### Legend Main Map

- ▲ WTG Layout Design Basis
- Exclusion Zone
- Sub Station
- Planned Interarray Cable Route
- Planned Export Cable Route
- Consented Field Outline
- Bathymetry (m rel. to LAT)

### Legend Bathymetry

- < -26
- 24 -26
- 22 -24
- 20 -22
- 18 -20
- 16 -18
- 14 -16
- 12 -14

### Legend Main Map

- ▲ WTG Layout Design Basis
- Exclusion Zone
- Sub Station
- Planned Interarray Cable Route
- Planned Export Cable Route
- Consented Field Outline
- Bathymetry (m rel. to LAT)

### Legend Bathymetry

- < -26
- 24 -26
- 22 -24
- 20 -22
- 18 -20
- 16 -18
- 14 -16
- 12 -14

### Legend Main Map

- ▲ WTG Layout Design Basis
- Exclusion Zone
- Sub Station
- Planned Interarray Cable Route
- Planned Export Cable Route
- Consented Field Outline
- Bathymetry (m rel. to LAT)

### Legend Bathymetry

- < -26
- 24 -26
- 22 -24
- 20 -22
- 18 -20
- 16 -18
- 14 -16
- 12 -14

### Legend Main Map

- ▲ WTG Layout Design Basis
- Exclusion Zone
- Sub Station
- Planned Interarray Cable Route
- Planned Export Cable Route
- Consented Field Outline
- Bathymetry (m rel. to LAT)

### Legend Bathymetry

- < -26
- 24 -26
- 22 -24
- 20 -22
- 18 -20
- 16 -18
- 14 -16
- 12 -14

### Legend Main Map

- ▲ WTG Layout Design Basis
- Exclusion Zone
- Sub Station
- Planned Interarray Cable Route
- Planned Export Cable Route
- Consented Field Outline
- Bathymetry (m rel. to LAT)

### Legend Bathymetry

- < -26
- 24 -26
- 22 -24
- 20 -22
- 18 -20
- 16 -18
- 14 -16
- 12 -14

### Legend Main Map

- ▲ WTG Layout Design Basis
- Exclusion Zone
- Sub Station
- Planned Interarray Cable Route
- Planned Export Cable Route
- Consented Field Outline
- Bathymetry (m rel. to LAT)

### Legend Bathymetry

- < -26
- 24 -26
- 22 -24
- 20 -22
- 18 -20
- 16 -18
- 14 -16
- 12 -14

### Legend Main Map

- ▲ WTG Layout Design Basis
- Exclusion Zone
- Sub Station
- Planned Interarray Cable Route
- Planned Export Cable Route
- Consented Field Outline
- Bathymetry (m rel. to LAT)

### Legend Bathymetry

- < -26
- 24 -26
- 22 -24
- 20 -22
- 18 -20
- 16 -18
- 14 -16
- 12 -14

### Legend Main Map

- ▲ WTG Layout Design Basis
- Exclusion Zone
- Sub Station
- Planned Interarray Cable Route
- Planned Export Cable Route
- Consented Field Outline
- Bathymetry (m rel. to LAT)

### Legend Bathymetry

- < -26
- 24 -26
- 22 -24
- 20 -22
- 18 -20
- 16 -18
- 14 -16
- 12 -14

### Legend Main Map

- ▲ WTG Layout Design Basis
- Exclusion Zone
- Sub Station
- Planned Interarray Cable Route
- Planned Export Cable Route
- Consented Field Outline
- Bathymetry (m rel. to LAT)

### Legend Bathymetry

- < -26
- 24 -26
- 22 -24
- 20 -22
- 18 -20
- 16 -18
- 14 -16
- 12 -14

### Legend Main Map

- ▲ WTG Layout Design Basis
- Exclusion Zone
- Sub Station
- Planned Interarray Cable Route
- Planned Export Cable Route
- Consented Field Outline
- Bathymetry (m rel. to LAT)

### Legend Bathymetry

- < -26
- 24 -26
- 22 -24
- 20 -22
- 18 -20
- 16 -18
- 14 -16
- 12 -14

### Legend Main Map

- ▲ WTG Layout Design Basis
- Exclusion Zone
- Sub Station
- Planned Interarray Cable Route
- Planned Export Cable Route
- Consented Field Outline
- Bathymetry (m rel. to LAT)

### Legend Bathymetry

- < -26
- 24 -26
- 22 -24
- 20 -22
- 18 -20
- 16 -18
- 14 -16
- 12 -14

### Legend Main Map

- ▲ WTG Layout Design Basis
- Exclusion Zone
- Sub Station
- Planned Interarray Cable Route
- Planned Export Cable Route
- Consented Field Outline
- Bathymetry (m rel. to LAT)

### Legend Bathymetry

- < -26
- 24 -26
- 22 -24
- 20 -22
- 18 -20
- 16 -18
- 14 -16
- 12 -14

### Legend Main Map

- ▲ WTG Layout Design Basis
- Exclusion Zone
- Sub Station
- Planned Interarray Cable Route
- Planned Export Cable Route
- Consented Field Outline
- Bathymetry (m rel. to LAT)

### Legend Bathymetry

- < -26
- 24 -26
- 22 -24
- 20 -22
- 18 -20
- 16 -18
- 14 -16
- 12 -14

### Legend Main Map

- ▲ WTG Layout Design Basis
- Exclusion Zone
- Sub Station
- Planned Interarray Cable Route
- Planned Export Cable Route
- Consented Field Outline
- Bathymetry (m rel. to LAT)

### Legend Bathymetry

- < -26
- 24 -26
- 22 -24
- 20 -22
- 18 -20
- 16 -18
- 14 -16
- 12 -14

### Legend Main Map

- ▲ WTG Layout Design Basis
- Exclusion Zone
- Sub Station
- Planned Interarray Cable Route
- Planned Export Cable Route
- Consented Field Outline
- Bathymetry (m rel. to LAT)

### Legend Bathymetry

- < -26
- 24 -26
- 22 -24
- 20 -22
- 18 -20
- 16 -18
- 14 -16
- 12 -14

### Legend Main Map

- ▲ WTG Layout Design Basis
- Exclusion Zone
- Sub Station
- Planned Interarray Cable Route
- Planned Export Cable Route
- Consented Field Outline
- Bathymetry (m rel. to LAT)

### Legend Bathymetry

- < -26
- 24 -26
- 22 -24
- 20 -22
- 18 -20
- 16 -18
- 14 -16
- 12 -14

### Legend Main Map

- ▲ WTG Layout Design Basis
- Exclusion Zone
- Sub Station
- Planned Interarray Cable Route
- Planned Export Cable Route
- Consented Field Outline
- Bathymetry (m rel. to LAT)

### Legend Bathymetry

- < -26
- 24 -26
- 22 -24
- 20 -22
- 18 -20
- 16 -18
- 14 -16
- 12 -14

### Legend Main Map

- ▲ WTG Layout Design Basis
- Exclusion Zone
- Sub Station
- Planned Interarray Cable Route
- Planned Export Cable Route
- Consented Field Outline
- Bathymetry (m rel. to LAT)

### Legend Bathymetry

- < -26
- 24 -26
- 22 -24
- 20 -22
- 18 -20
- 16 -18
- 14 -16
- 12 -14

### Legend Main Map

- ▲ WTG Layout Design Basis
- Exclusion Zone
- Sub Station
- Planned Interarray Cable Route
- Planned Export Cable Route
- Consented Field Outline
- Bathymetry (m rel. to LAT)

### Legend Bathymetry

- < -26
- 24 -26
- 22 -24
- 20 -22
- 18 -20
- 16 -18
- 14 -16
- 12 -14

### Legend Main Map

- ▲ WTG Layout Design Basis
- Exclusion Zone
- Sub Station
- Planned Interarray Cable Route
- Planned Export Cable Route
- Consented Field Outline
- Bathymetry (m rel. to LAT)

### Legend Bathymetry

- < -26
- 24 -26
- 22 -24
- 20 -22
- 18 -20
- 16 -18
- 14 -16
- 12 -14

### Legend Main Map

- ▲ WTG Layout Design Basis
- Exclusion Zone
- Sub Station
- Planned Interarray Cable Route
- Planned Export Cable Route
- Consented Field Outline
- Bathymetry (m rel. to LAT)

### Legend Bathymetry

- < -26
- 24 -26
- 22 -24
- 20 -22
- 18 -20
- 16 -18
- 14 -16
- 12 -14

### Legend Main Map

- ▲ WTG Layout Design Basis
- Exclusion Zone
- Sub Station
- Planned Interarray Cable Route
- Planned Export Cable Route
- Consented Field Outline
- Bathymetry (m rel. to LAT)

### Legend Bathymetry

- < -26
- 24 -26
- 22 -24
- 20 -22
- 18 -20
- 16 -18
- 14 -16
- 12 -14

### Legend Main Map

- ▲ WTG Layout Design Basis
- Exclusion Zone
- Sub Station
- Planned Interarray Cable Route
- Planned Export Cable Route
- Consented Field Outline
- Bathymetry (m rel. to LAT)

### Legend Bathymetry

- < -26
- 24 -26
- 22 -24
- 20 -22
- 18 -20
- 16 -18
- 14 -16
- 12 -14

### Legend Main Map

- ▲ WTG Layout Design Basis
- Exclusion Zone
- Sub Station
- Planned Interarray Cable Route
- Planned Export Cable Route
- Consented Field Outline
- Bathymetry (m rel. to LAT)

### Legend Bathymetry

- < -26
- 24 -26
- 22 -24
- 20 -22
- 18 -20
- 16 -18
- 14 -16
- 12 -14

### Legend Main Map

- ▲ WTG Layout Design Basis
- Exclusion Zone
- Sub Station
- Planned Interarray Cable Route
- Planned Export Cable Route
- Consented Field Outline
- Bathymetry (m rel. to LAT)

### Legend Bathymetry

- < -26
- 24 -26
- 22 -24
- 20 -22
- 18 -20
- 16 -18
- 14 -16
- 12 -14

### Legend Main Map

- ▲ WTG Layout Design Basis
- Exclusion Zone
- Sub Station
- Planned Interarray Cable Route
- Planned Export Cable Route
- Consented Field Outline
- Bathymetry (m rel. to LAT)

### Legend Bathymetry

- < -26
- 24 -26
- 22 -24
- 20 -22
- 18 -20
- 16 -18
- 14 -16
- 12 -14

### Legend Main Map

- ▲ WTG Layout Design Basis
- Exclusion Zone
- Sub Station
- Planned Interarray Cable Route
- Planned Export Cable Route
- Consented Field Outline
- Bathymetry (m rel. to LAT)

### Legend Bathymetry

- < -26
- 24 -26
- 22 -24
- 20 -22
- 18 -20
- 16 -18
- 14 -16
- 12 -14

### Legend Main Map

- ▲ WTG Layout Design Basis
- Exclusion Zone
- Sub Station
- Planned Interarray Cable Route
- Planned Export Cable Route
- Consented Field Outline
- Bathymetry (m rel. to LAT)

### Legend Bathymetry

- < -26
- 24 -26
- 22 -24
- 20 -22
- 18 -20
- 16 -18
- 14 -16
- 12 -14

### Legend Main Map

- ▲ WTG Layout Design Basis
- Exclusion Zone
- Sub Station
- Planned Interarray Cable Route
- Planned Export Cable Route



## Dudgeon Wind Farm Contact details

Equinor Wind Control Centre is located:

**Dudgeon Offshore Wind Ltd**

**50 South Denes Road**

**Great Yarmouth**

**NR30 3PR**

**Equinor Wind Control Tel +44 1493 841710**

**Equinor Front of House Security +44 1493 841700**

## VESSEL CONTACT DETAILS

### ESVAGT NJORD



**Call sign:** OWZN2

VHF channel 16

**Bridge Phone:** VSAT.TEL: +45 32 71 26 89; / GSM: +45 32 71 26 85

**E-mail:** njord@esvagtvesel.com